



# QT PLACES

## **THE MANUAL**

### **1. INSTALLATION**

PAG. 1

### **2. ADDING NEW PLACES**

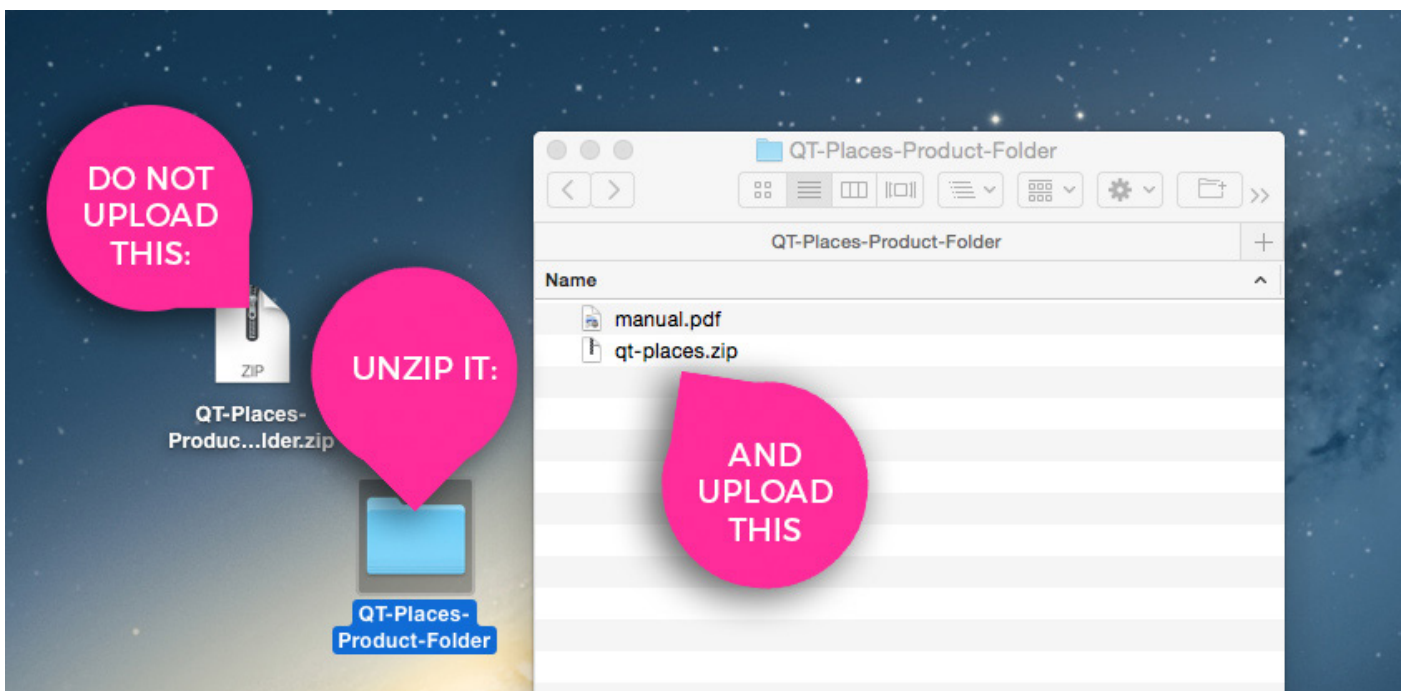
PAG. 4

### **3. HOW TO DISPLAY A MAP**

PAG. 5

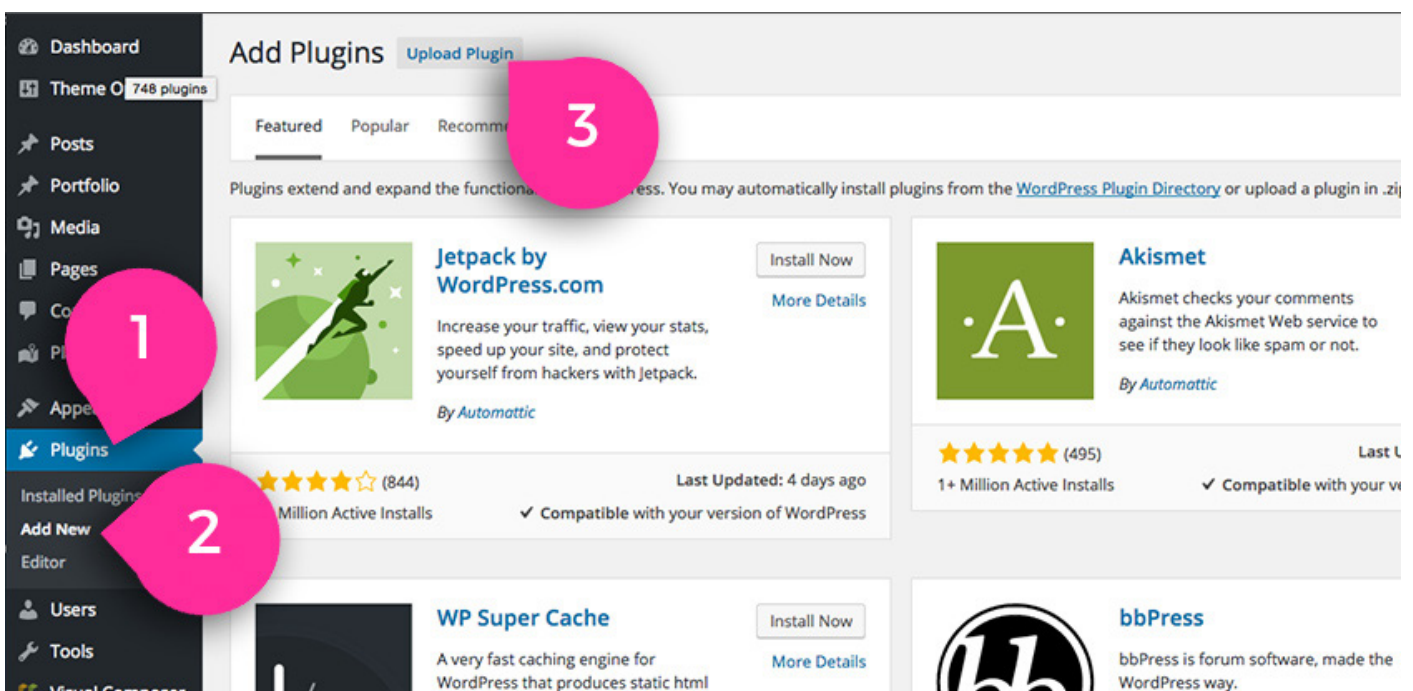
# 1. INSTALLATION

**1. Unzip the product folder downloaded from Codecanyon on your desktop. Do not upload the entire product folder as it contains also the manual and other files.**

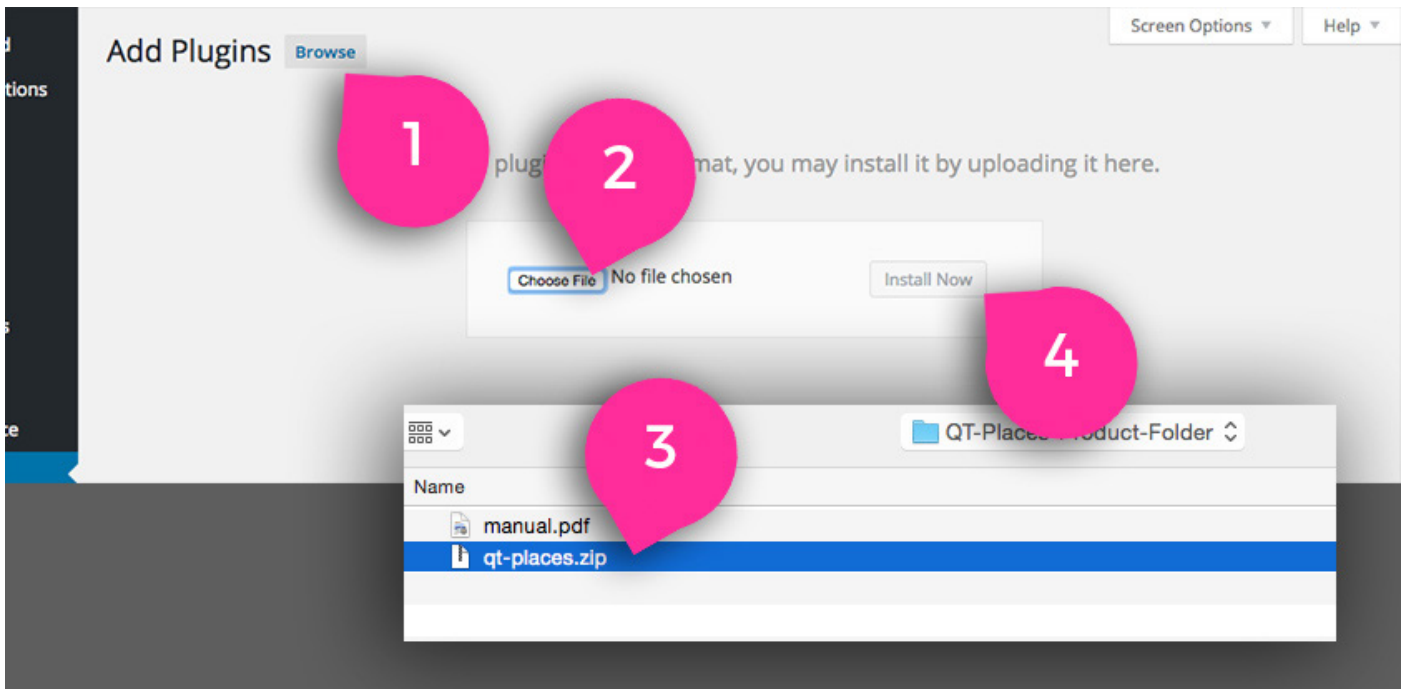


**2. Go to the WP Plugins page and click “Add New”.**

**3. Click the “Upload Plugin” button.**



**4. Click “browse” and find the unzipped plugin folder in your desktop. Choose the plugin file called qt-places.zip.**

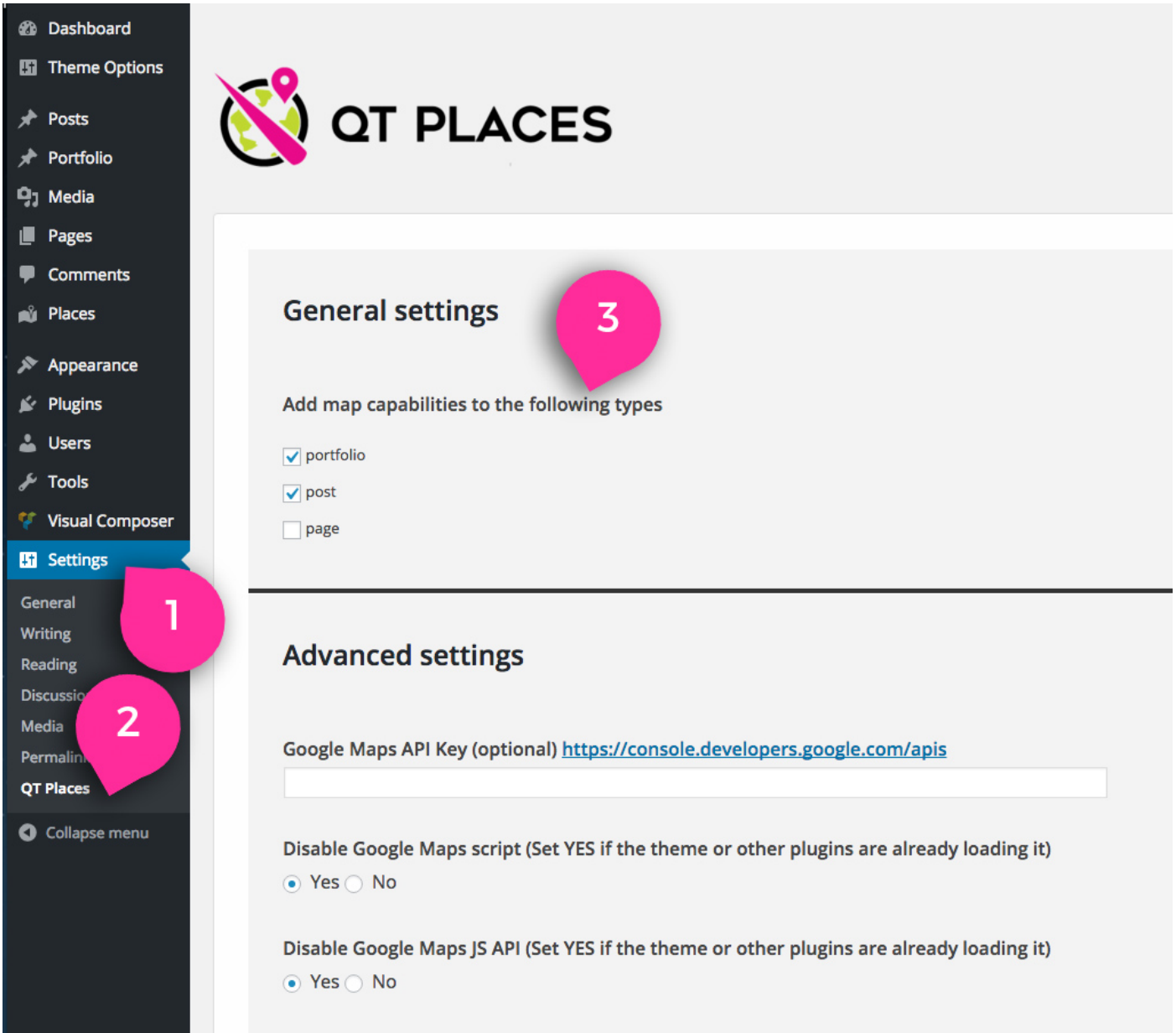


**5. Click “Install Now”.**

**6. Click the “Activate Plugin” link.**

## 7. In Settings->QT Places you can add Places capabilities to other existing post types.

In the example below, you can see the default “Post” and “Page” post types, plus a “Portfolio” post type which is a custom type created by the theme. You can add Places capabilities to any post type, and create a map of custom types adding to the shortcode the parameter `posttype=""`



**General settings** 3

Add map capabilities to the following types

- portfolio
- post
- page

---

**Advanced settings**

Google Maps API Key (optional) <https://console.developers.google.com/apis>

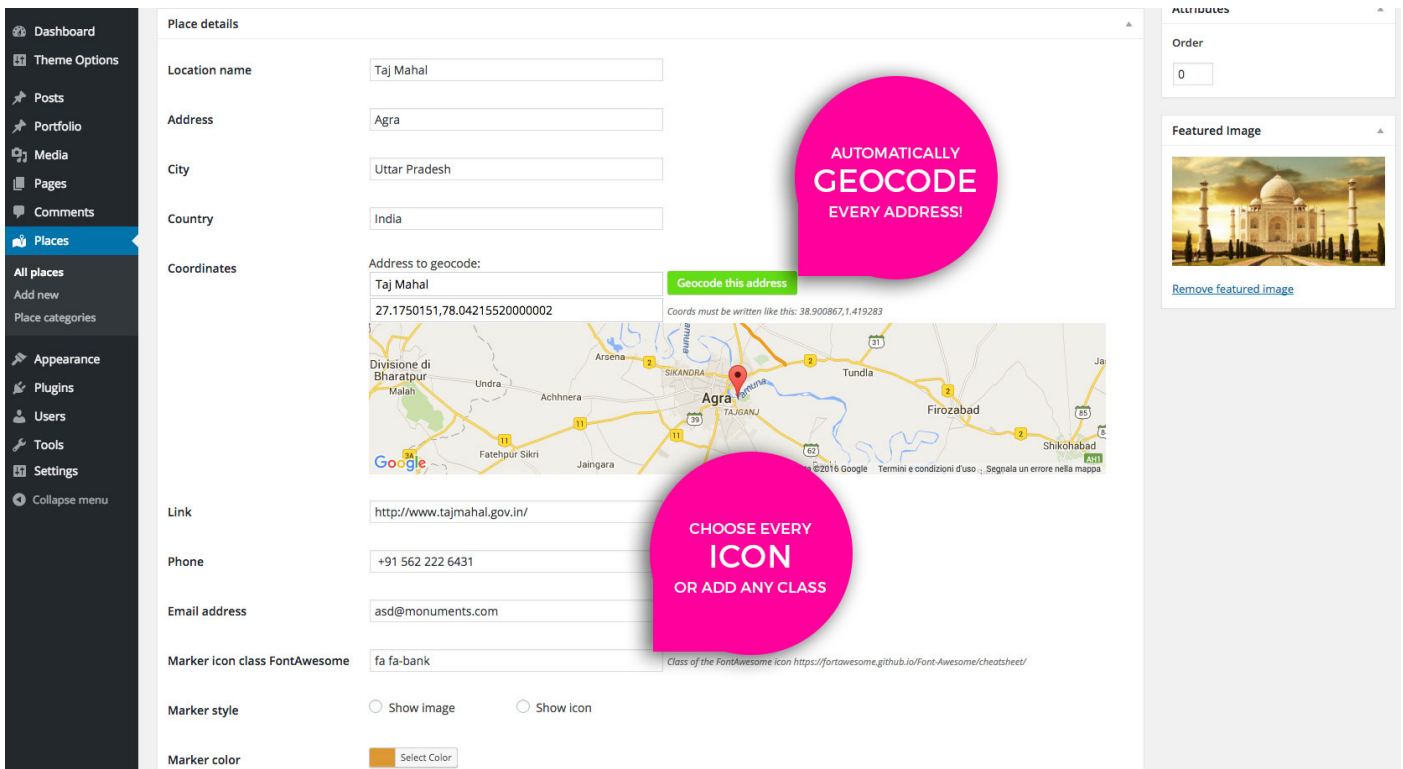
Disable Google Maps script (Set YES if the theme or other plugins are already loading it)

Yes  No

Disable Google Maps JS API (Set YES if the theme or other plugins are already loading it)

Yes  No

# 2. ADDING NEW PLACES



**Place details**

Location name:

Address:

City:

Country:

Coordinates

Address to geocode:

27.1750151,78.04215520000002 Coords must be written like this: 38.900867,1.419283

Link:

Phone:

Email address:

Marker icon class FontAwesome:  Class of the FontAwesome icon <https://fontawesome.github.io/Font-Awesome/cheatsheet/>


Marker style:  Show image  Show icon

Marker color:

**Attributes**

Order:

**Featured Image**



[Remove featured image](#)

To add new places to your maps, click Places->Add New

If the location name is the same of the page title, in the marker informations it will not be displayed.

Address, city and country will be displayed in a formatted way.

If you don't know the coordinates of a place, just type its address in the field "Address to geocode" and click the "Geocode this address" green button.

If the location shown in the map is not correct, you can manually add your own coordinates. The coordinates must be written as latitude,longitude as in the example.

The phone number will automatically launch a call if clicked from a mobile device, and the email field will automatically launch a new email creation.

If you want to add a custom icon, you can simply copy an icon name from the [fontawesome cheatsheet here: https://fontawesome.github.io/Font-Awesome/cheatsheet/](https://fontawesome.github.io/Font-Awesome/cheatsheet/)

If your theme or any plugin adds extra icons, you can use any class from other icon sets.

The Marker Style defines how you want the marker to appear in the map. By default, if a featured image is loaded, you'll see a thumbnail. If you want to display only the icon, select the "Show Icon" option.

Every marker can also have its own color. The marker color will override the map color settings.

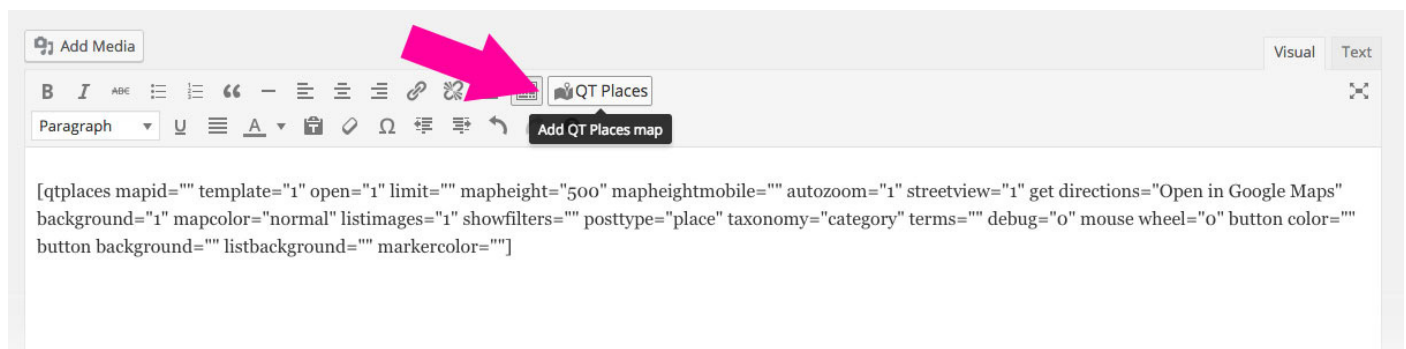
# 3. HOW TO DISPLAY A MAP

To simply display a map with default parameters, including all the Places of your archive, simply add the shortcode

**[qtplaces]**

## Custom maps:

To display a custom map, edit a page or post, and click the QT Places button in the editor:



In this way, a complete shortcode will be added to the page. You can always find the full list of parameters in the QT Places settings page.

## Complete Shortcode

```
[qtplaces mapid="" template="1" open="1" limit="" mapheight="500" mapheightmobile="" autozoom="1" streetview="1" getdirections="Open in Google Maps" mapcolor="normal" listimages="1" showfilters="1" posttype="place" taxonomy="category" terms="" debug="0" mousewheel="0" buttoncolor="" buttonbackground="" listbackground="" markercolor=""]
```

# ADVANCED TIPS

## Using custom post types:

To create a map of a different post type, you need first to enable it in Settings -> QT Maps.

Then, in the shortcode, add the attribute `posttype="slug"`

The word "slug" must be replaced with the slug of the desired post type. You can retrieve the slug of your chosen post type in this way: click on your desired post type, for example "Pages", and look at the URL of your page: it will be something like

```
/wp-admin/post-new.php?post_type=page
```

The correct slug of the post type Pages is "page".

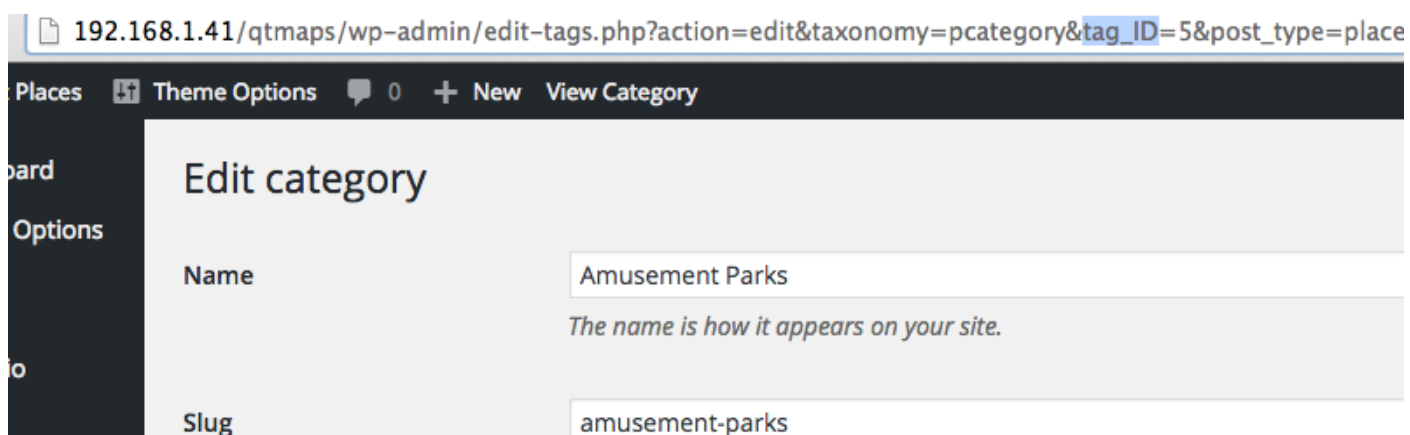
## Using custom taxonomies:

By default, the shortcode uses the taxonomy `qtplaces`, but if you want to create a custom map of another post type, and filter the results by a category, you need to use the taxonomy attribute. like this:

```
[qtplaces posttype="post" taxonomy="category" terms="2,"]
```

This will create the filters on the map using that particular taxonomy.

To find the SLUG of the desired taxonomy, click on the admin page of that taxonomy, and observe the URL.. To find the ID of a term of that taxonomy, click on that term, and look at the URL parameter **tag\_ID**. You can add as many numeric IDS as you want.



The screenshot shows a browser window with the URL `192.168.1.41/qtmaps/wp-admin/edit-tags.php?action=edit&taxonomy=pcategory&tag_ID=5&post_type=place`. The WordPress admin interface is visible, with a dark sidebar on the left containing 'Places', 'Theme Options', '0', '+ New', and 'View Category'. The main content area is titled 'Edit category' and contains two input fields: 'Name' with the value 'Amusement Parks' and a subtitle 'The name is how it appears on your site.', and 'Slug' with the value 'amusement-parks'.

## Shortcode attributes

Shortcode attribute	Type	Default	Usage
autozoom	boolean	false	Set to 1 to zoom a location when clicking a marker
background	boolean	1	Show background images in the list
buttoncolor	string		Text Hex color for the buttons, like #FFFFFF
buttonbackground	string		Background color for the buttons, like #FF0000
debug	boolean	false	In case of issues, set to 1 or true to display the query
getdirections	string	Get directions	String used for the link to get the directions. In mobile opens the navigation. Leave empty to hide the link
limit	integer	-1	Max number of results. -1: show all the listings
listimages	boolean	1	Show background images in the list
listbackground	string		Background color for the list items, like #FF0000
mapcolor	dark,light,normal	dark	Map color
mapheight	integer	500	Map height (desktop)
mapheightmobile	integer	400	Map height (mobile)
mapid	string	(random if empty)	ID of the map. Use only letters. if empty, a random string is used.
mousewheel	boolean	false	Set to 1 to enable mouse wheel zooming
markercolor	string		Background color for the map markers, like #FF0000
open	boolean	false	If using templates 2 or 3, set open to 1 if you want the menu to be open when loading the page
posttype	string	place	Post type used to extract the listing. Must be enabled in the settings.
showfilters	boolean	1	Display filters
streetview	boolean	false	Set to 1 enable the street view function
template	integer	1	Set 1, 2 or 3 to change map design.
taxonomy	string	pcategory	Taxonomy to use for the filters, to display only items within a certain taxonomy
terms	array of integers		Use the ids of the taxonomy to filter the results, like this: 192,32,45

## Support

[For support please visit our helpdesk: <http://qantumthemes.com/helpdesk>



# CREDITS

---

jQuery

Google Maps RichMarker

Google Maps

Google Maps js Api